

My Old School

Steely Dan

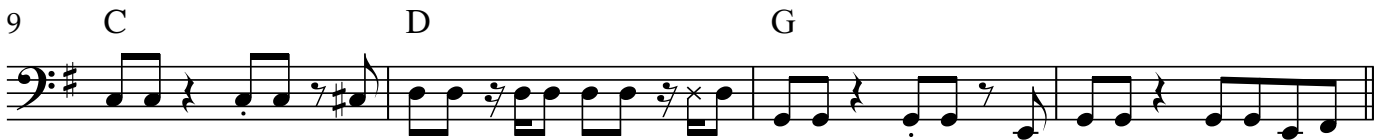
Transcribed by Gregory Harper
Original bassline by Walter Becker

Becker/Fagen

♩ = 130



Verse 1 - "I remember..."



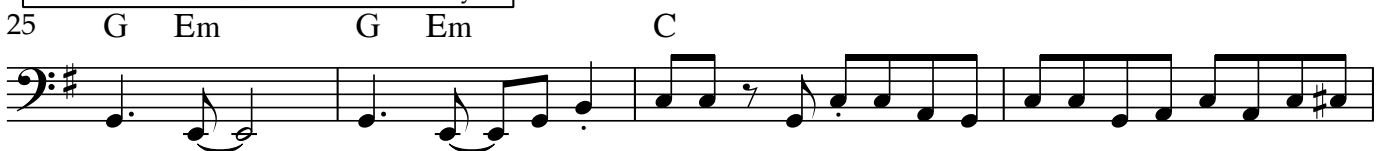
"It was still September..."



Pre Chorus 1 - "Well I was smoking..."



Chorus 1 - "Oh no, William and Mary..."



33 D Am⁷ Bm⁷ G

Gr. Solo 1

37 D Em⁷ Am⁷ Bm⁷ Em⁷ 1. 2. N.C.

Verse 2 - "Oleanders growing..."

42 G Em⁷

46 C D G

"I can't stand her..."

50 G Em⁷

54 C D G

Pre Chorus 2 - "Well I hear the whistle but..."

58 C D

Chorus 2 - "Oh no, Guadalajara won't do..."

62 G Em G Em C

66 D Am⁷ Bm⁷ Em⁷

70 D Am⁷ Bm⁷ G

73

Musical staff for measure 73, bass clef, key signature of one sharp (F#). The staff contains a sequence of eighth and quarter notes.

Gr. Solo 2 [x3]

76 D Em⁷ Am⁷ Bm⁷ Em⁷ 1.2. 3. X3

Musical staff for measures 76-78, bass clef, key signature of one sharp (F#). Chords are indicated above the staff: D, Em⁷, Am⁷, Bm⁷, Em⁷. The staff includes a first ending bracket with first and second endings, and a repeat sign with 'X3' below it.

Breakdown

81 C⁷ C#^{o7} D

Musical staff for measures 81-83, bass clef, key signature of one sharp (F#). Chords are indicated above the staff: C⁷, C#^{o7}, D.

Horn Soli

85 G

Musical staff for measures 85-88, bass clef, key signature of one sharp (F#). The staff contains a sequence of eighth and quarter notes.

89 Am⁷ Bm⁷ Em⁷ D

Musical staff for measures 89-92, bass clef, key signature of one sharp (F#). Chords are indicated above the staff: Am⁷, Bm⁷, Em⁷, D.

93 Am⁷ Bm⁷ Em⁷ D

Musical staff for measures 93-96, bass clef, key signature of one sharp (F#). Chords are indicated above the staff: Am⁷, Bm⁷, Em⁷, D.

96

Musical staff for measures 96-97, bass clef, key signature of one sharp (F#). The staff contains a sequence of eighth and quarter notes.

Gr. Solo 3

98 G

Musical staff for measures 98-101, bass clef, key signature of one sharp (F#). The staff contains a sequence of eighth and quarter notes.

Verse 3 - "California tumbles into the sea..."

102 G Em⁷

Musical staff for measures 102-105, bass clef, key signature of one sharp (F#). Chords are indicated above the staff: G, Em⁷.

106 C D G

Musical staff for measures 106-109, bass clef, key signature of one sharp (F#). Chords are indicated above the staff: C, D, G.

"I tried to warn you..."

110 G Em⁷

114 C D G

Pre Chorus 3 - "Well I hear the whistle..."

118 C D

Chorus 3 - "Oh no, Guadalajara won't do..."

122 G Em G Em C

126 D Am⁷ Bm⁷ Em⁷

129 D Am⁷ Bm⁷

132 G

136

Gtr Solo 4

140 D Em⁷ Am⁷ Bm⁷ Em⁷

144 D Em⁷ Am⁷ Bm⁷ Em⁷

148 D Em⁷ Am⁷ Bm⁷ Em⁷

FADE OUT BEGINS

152 D Em⁷ Am⁷ Bm⁷ Em⁷

156 D Em⁷ Am⁷ Bm⁷ Em⁷

160 D Em⁷ Am⁷ Bm⁷ Em⁷

163 D